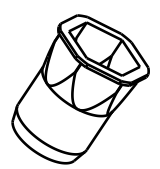
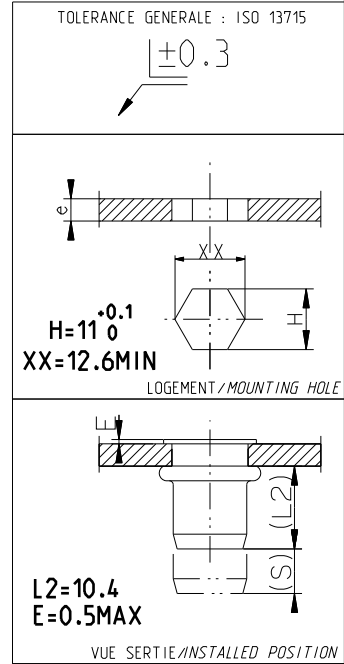
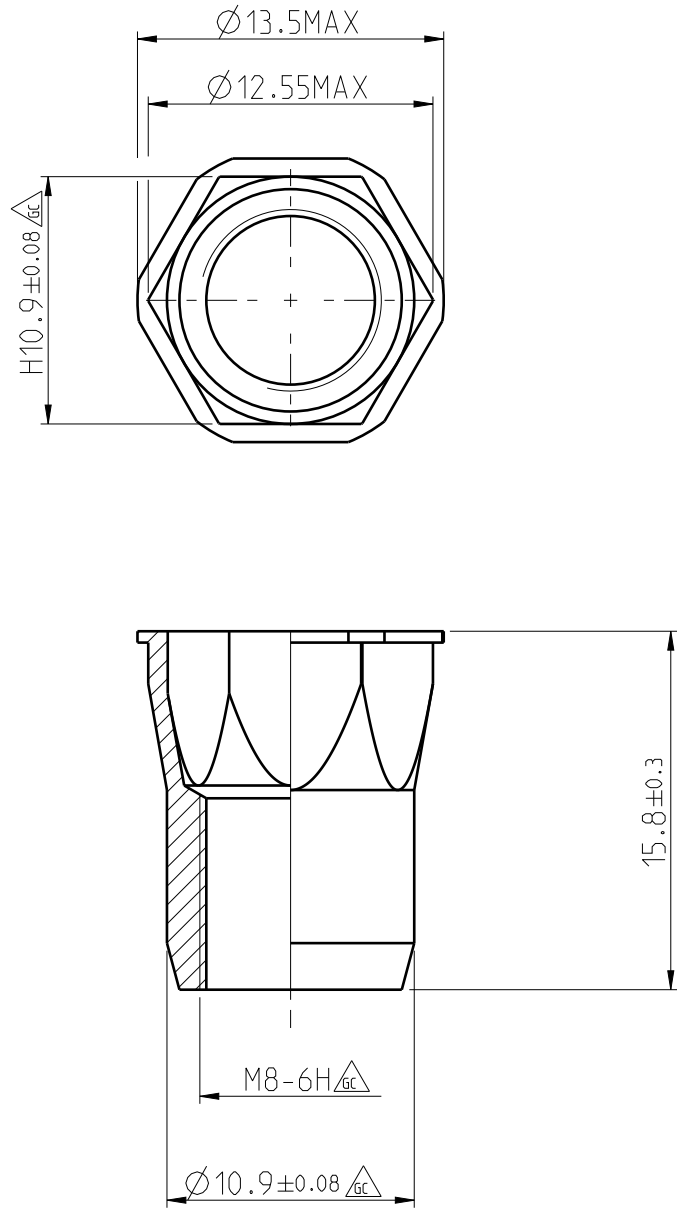


THIS DRAWING AND THE INTELLECTUAL PROPERTY RIGHTS ARE THE PROPERTY OF BOLLHOFF-CAD SYSTEM- CREO PARAMETRIC.

CE PLAN APPARTIENT A LA SOCIETE BOLLHOFF. IL NE PEUT ETRE COPIE, REPRODUIT OU COMMUNIQUE A DES TIERS SANS AUTORISATION. SYSTEME CAO : CREO PARAMETRIC.

HIERARCHISATION/ CLASSIFICATION : \triangle_{SR} CpK \geq 1.66. \triangle_1 CpK \geq 1.47. \triangle_2 CpK \geq 1.33. \triangle_3 CpK \geq 1. \triangle_{GC} GAUGE CONTROL / CONTROLE AUX ATTRIBUTS. AUTRES DIMENSIONS NON SUJETTES A CAPABILITE / OTHER DIMENSIONS NOT SUBJECT TO CAPABILITY.



ECHELLE / SCALE 1/1

() = VALEUR INDICATIVE / INDICATIVE VALUE

22/11/16	BBZ	FJD	MISE A JOUR GEOMETRIE TETE UPDATED HEAD GEOMETRY
DATE / DATE	NOM / NAME	VERIFIE PAR / CHECKED BY	DERNIERE MODIFICATION / LAST MODIFICATION

CE PRODUIT EST CONCU POUR ETRE SERTI SUR LES MATIERES SUIVANTES : **ACIER**
 THIS PRODUCT IS DESIGNED TO BE SET ON THE FOLLOWING MATERIALS : **STEEL**

EFFORT DE POSE RECOMMANDE / RECOMMENDED SETTING LOAD	(N) : 18000	<p>LONGUEUR TARAUDAGE UTILE / COMPLETE THREAD LENGTH: 7.6MIN FR (BOLLHOFF SPECIFICATION)</p>	CHARGE D'EPREUVE / PROOFLOAD (N) :	<p>COUPLE DE SERRAGE MAX / MAX TORQUE ON SCREW (N.m): 24 PIECE IMMOBILISEE / PART HELD STATIONARY MR (BOLLHOFF SPECIFICATION)</p>
PLAGE DE SERTISSAGE / GRIP RANGE	e(mm) : 0.5 A/TO 3.0		27000	
COURSE DE SERTISSAGE / STROKE	S(mm) : 4.7 -e			

MATIERE / MATERIAL:	TRAITEMENT DE SURFACE / COATING:	BOLLHOFF	
X3CrNiCu18-9-4/1.4567/A2	-		

FINITION RENF. / TOP COAT :	NO	LUBRIFICATION / LUBRICATION :	NO	FAMILLE / FAMILY:	
				RIVKLE® M8	
FORMAT / PAPER:	POIDS / WEIGHT:	ECHELLE / SCALE:	DATE / DATE:	DESSINE PAR / DRAWN BY:	VERIFIE PAR / CHECKED BY:
A4	~4.9 g	3/1	23/11/01	SFR	SML

DESIGNATION			N° ARTICLE / PART NUMBER		TYPE	REV.
RF48 M 8			34348080030		02	L